



60&80W Single output power supply

SD Series

- High efficiency, long service life and high reliability
- Output protection function: Over current/short circuit
- Ultra wide operating temperature range -10°C ~ 60°C
- Long service life electrolytic capacitor
- 100% full load ageing test
- No fan, quiet
- 3 years



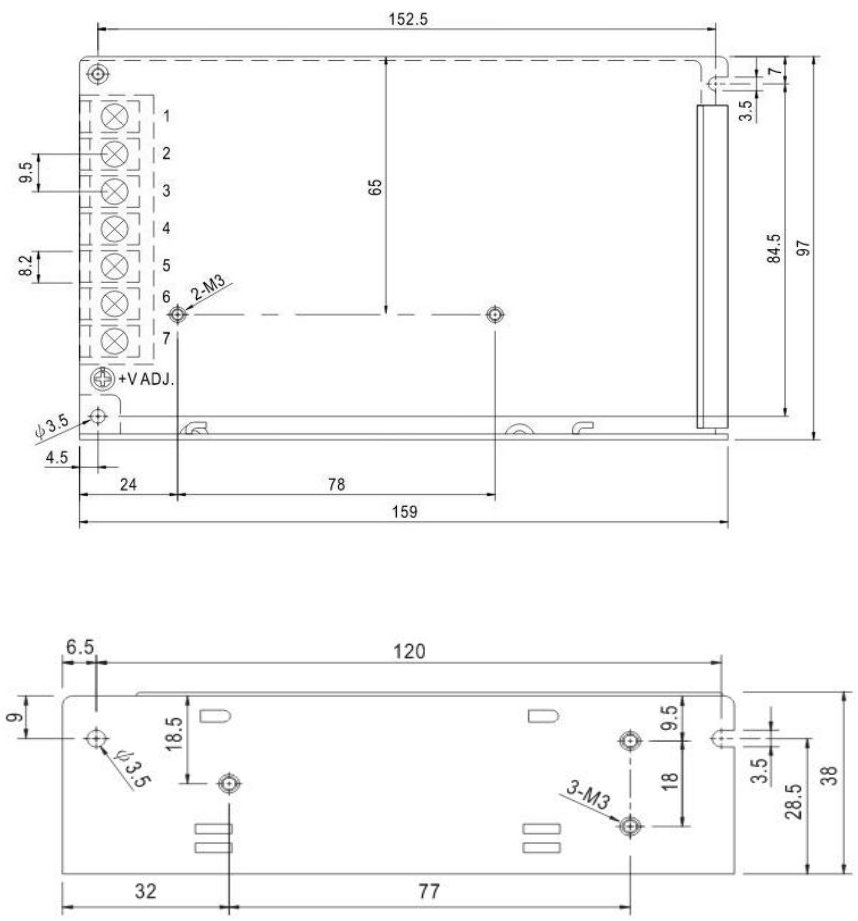
MODEL		SD-60A-5	SD-60B-5	SD-80C-5	SD-60A-12	SD-60B-12	SD-80C-12	SD-60A-24	SD-60B-24	SD-80C-24
OUTPUT	DC Output	5V			12V			24V		
	Rated Current	12A	12A	16A	5A	5A	6.7A	2.5A	2.5A	3.3A
	Current Range	0~12A	0~12A	0~16A	0~5A	0~5A	0~6.7A	0~2.5A	0~2.5A	0~3.3A
	Ripple and Noise	100mV			120mV			150mV		
	Voltage ADJ. Range	±10% of rated output voltage								
	Voltage Accuracy	±2.0%			±1.0%			±1.0%		
	Line Regulation	±0.5%			±0.3%			±0.2%		
	Load Regulation	±0.5%			±0.3%			±0.2%		
	Set-up Time	< 1S								
	Hold up Time	< 50ms								
INPUT	Voltage Range	A:10 ~ 18VDC B:20 ~ 36VDC C:36 ~ 72VDC								
	Frequency Range	47Hz~63Hz								
	Efficiency	70%	72%	73%	72%	73%	75%	72%	75%	78%
PROTECT ION	Over Load	105%~150% of rated output current, hiccup mode, auto recovery								
	Over power	120%~135% of rated output current, hiccup mode, auto recovery								
	Short Circuit	Long-term mode, auto recovery								
ENVIRO NMENT	Operating amb. Temp. & Hum.	-10°C~60°C; 20%~90%RH								
	Storage Temp. & Hum.	-40°C~85°C; 10%~95%RH								
SAFETY &EMC	Safety Standards	Reference LVD design, TUV EN62368-1								
	Withstand Voltage	I/P-O/P:1.5KVAC I/P-FG:2.0KVAC O/P-FG:0.5KVAC								
OTHERS	MTBF (MIL-HDBK-217F)	More than 100,000Hrs (25°C, Full load)								
	Dimension (L*W*H)	159*98*38mm								
	Packing	400g/PCS								
	Cooling method	Cooling by free air convection								
注释	1. All parameters NOT specially mentioned are measured at rated input, rated load and 25°C of ambient temperature.									

Block diagram of internal mechanism





Organization size chart::



Declining curve:

